

# PEMPHERO LOCHITA

Phunziro 7, May 16, 2026

---

“Dalirani Iye  
nthawi zonse, inu  
anthu;  
khuthulani mitima  
yanu kwa Iye,  
pakuti Mulungu  
ndiye pothawirapo  
pathu”

(Masalimo 62:8, ccl)

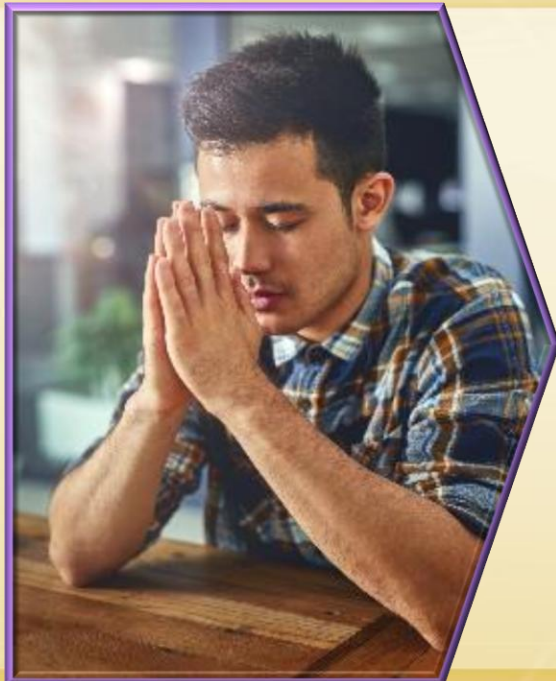
---



Paulo amatilangiza kuti tipitirize ‘kupemphera nthawi zonse’ (Aefeso 6:18), ngakhale dziko lathu ligwe; ngakhale nthawi ipite tisanawone yankho la mapemphero athu.

Muzochitika ngati izi, mapemphero a Eliya ndi Hana adzatithandiza ndi kutilimbikitsa.

Kodi tiyenera kupemphera motani? Kodi tizipempha chiyani? Kodi tizipempha tili patokha kapena limodzi ndi anthu ena? Kodi pemphero limangotilola kulankhula ndi Mulungu, kapena limatithandizanso kumuvetsera?



- Mapemphero mu nthawi zovuta:
  - ▶ Eliya: Pemphero pakati pa mavuto
  - ▶ Hana: Yankho losayankhidwa
- Mapemphero achitsanzo:
  - ▶ Yesu: Zamkati mwa pemphero
  - ▶ Danieli: Ndongomeko ya pemphero
- Mafunso anayi okhudza pemphero



MAPEMPHERO  
MUNTHAWI  
ZOVUTA

# ELIYA: PEMPHERO PAKATI PA MAVUTO

"Iye anayankha kuti, "Ndakhala wodzipereka kwambiri kwa Yehova Mulungu Wamphamvuzonse. Aisraeli asiya pangano lanu, agwetsa maguwa anu ansembe, ndipo apha aneneri anu ndi lupanga. Ndatsala ine ndekha ndipo tsopano akufuna kundipha.' " (1 Mafumu 19:10)



**Kodi Mulungu amayankha motani mapemphero athu pakati pa mavuto ?**

**Eliya atapemphera pemphero lophweka, Mulungu anayankha nthawi yomweyo ndi moto (1 Mafumu 18:36-38).**

**Atatha mapemphero asanu ndi awiri opempha mvula, Mulungu anatumiza mtambo waung'ono umene unasanduka mphepo ya mkuntho (1 Mafumu 18:42-45).**



**Pamene Eliya anapempha imfa, Mulungu anakhala chete, koma anatumiza mngelo wake kuti amudyetse (1 Mafumu 19:4-8).**

**Atakhumudwa ali muphanga, Eliya anamva mawu a Mulungu akuyankha pemphero lake lodzaza ndi chisoni pomaliza pake (1 Mafumu 19:9-18).**

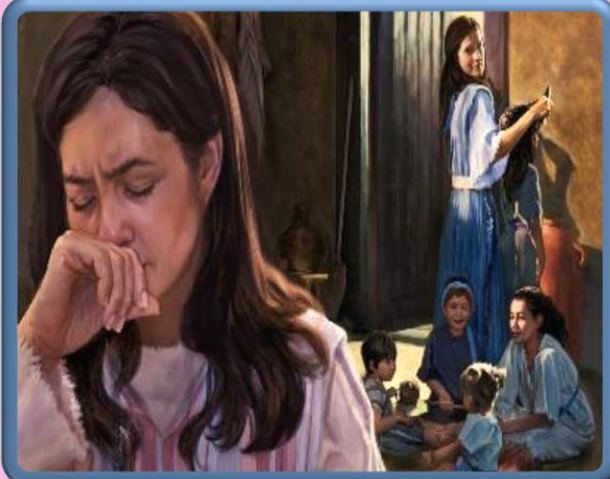
**Yankho lina linali lachangu komanso lodabwitsa. Lina, linayankhidwa patadutsa nthawi zisanu ndi ziwiri za pemphero, linabweretsa mvula imene inapemphedwa. Potsiriza, pakutha pa masiku 40, panabwera yankho la mawu olimbikitsa. Mulungu amadziwa mmene angayankhire komanso nthawi yoyenera kuyankha mu nyengo zonse.**



# HANA: PEMPHERO LOSAYANKHIDWA

**"Ndinapempha mwana uyu, ndipo Yehova wandipatsa chimene ndinamupempha." (1 Samuel 1:27)**

Pemphero la Hana lopempha mwana limawoneka ngati pemphero loyankhidwa mwachangu ndi Mulungu (ndithudi, pakutha pa miyezi isanu ndi inayi ya kuyembekezera mwachimwemwe,) (1 Samueli 1:9-20).



Koma, tikawerenga mavesi am'mbuyomu, tinaona kuti yankho limeneli lidatenga nthawi yayitali kwambiri kuti lifike (1 Sam. 1:1-8).

Peninnah, mkazi wina wa Elikana, anali ndi "ana"—kutanthauza kuti, ana amuna oposa mmodzi—ndipo "chaka ndi chaka" iye ankamukwiyitsa Hana chifukwa choti Mulungu sanamupatse ana.

Kutengera pa mfundo imeneyi, Hana anakhala zaka zingati akupempha mwana popanda kulandira yankho?

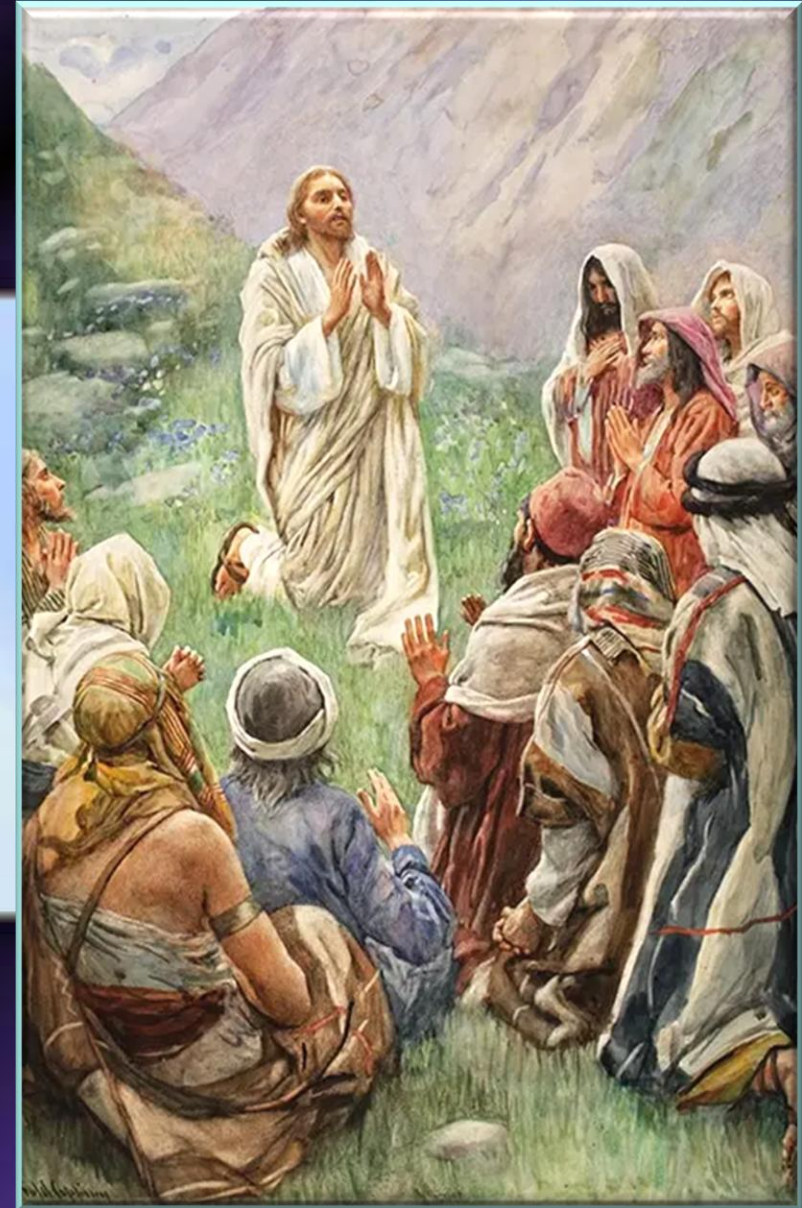


Nthawi zina, kukhala chete kwa Mulungu kumatha kukhala chifukwa cha dyera lathu (Yakobo 4:3); tchimo lomwe timalisunga mu mtima (Salmo 66:18); kusowa chikhulupiriro (Yakobo 1:6); kapena, mwachidule, kungoti si nthawi yoyenera.

Mulimonsemo, Mulungu amaona chithunzi chonse ndipo amadziwa zomwe zili zabwino kwa ife (Yeremiya 29:11). Iye nthawi zonse adzayankha, pa nthawi yake komanso m'njira yake, pemphero loperekedwa mwachikhulupiliro (1 Yohane 5:14-15).



MAPEPHERO  
ACHITSANZO



# YESU: ZAMKATI MWA PEMPHERO

“Chifukwa chake pempherani motere:” ‘Atate athu akumwamba, dzina lanu lilemekezedwe’ (Mateyu 6:9)

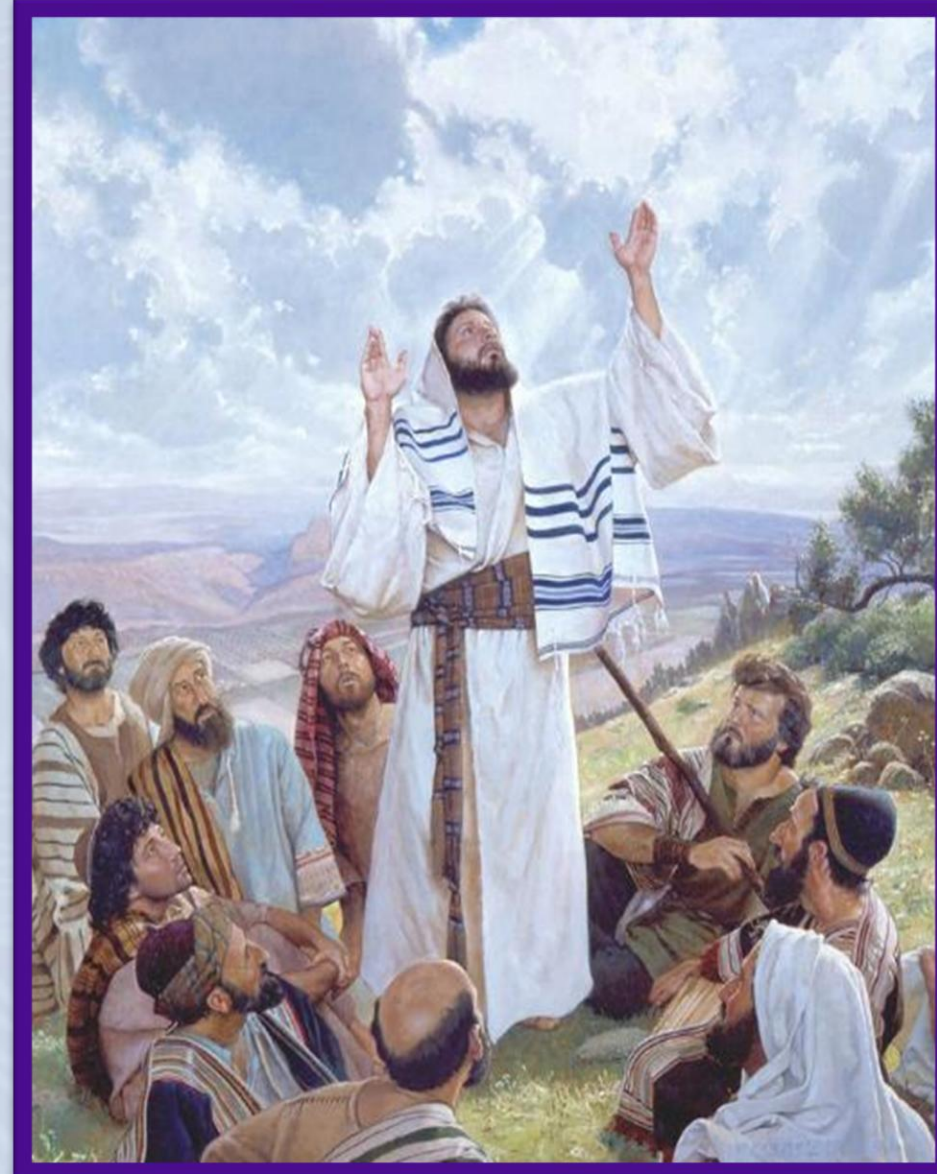


Kupemphera mapemphero aatali ndi omveka bwino kuti tisangalatse ndi kutamandidwa ndi omvera si mtundu wa pemphero umene Yesu anatiphunzitsa (Mateyu 6:5-8).

Mapemphero athu ayenera kukhala oona mtima ndi osavuta, m’chinenero cha tsiku ndi tsiku. Pemphero ndi gawo lofunika kwambiri la moyo wathu.



“Phunzirani kupemphera mapemphero afupiafupi ndi olunjika pa mfundo, mukanena ndendende zomwe mukusowa. Phunzirani kupempha mokweza mawu pamalo omwe Mulungu yekha angakumveni. Musapereke mapemphero achiphamaso, koma mapemphero ochokera pansu pa mtima ndi ozama, osonyeza njala ya mzimu yofuna Mkate wa Moyo.” (E.G.W. “Our high Calling”, May 4)





# YESU: ZAMKATI MWA PEMPHERO



Ichi ndi chitsanzo cha pemphero chimene Yesu anatipatsa:

**“Atate athu akumwamba”**

**Tiyenera kuzindikira ubale wathu wamunthu aliyense payekha ndi Atate wathu**

**“Dzina lanu lilemekezedwe”**

**Kuzindikira chiyero cha Mulungu kumatikokera pafupi ndi lye mwa ulemu ndi mantha**

**“Ufumu wanu udze”**

**Tiyeni tilakalake kubwera kwa Yesu**

**“Kufuna kwanu kuchitidwe, monga Kumwamba chomwecho pansi pano”**

**Tiyeni tivomereze ulamuliro wa Mulungu ndikupempha kuti chifuniro cha Mulungu chichitike m'miyoyo yathu komanso padziko lapansi**

**“Mutipatse ife lero chakudya chathu chalero”**

**Tiyeni tipemphe zomwe tikusowa kuti tikhale ndi moyo, wa kuthupi komanso wa uzimu**

**“Ndipo mutikhululukire mangawa athu, monga ifenso takhululukira amangawa anthu”**

**Tiyenera kulapa, kufunafuna chikhululukiro, ndi kukhululukira amene atilakwira, monga momwe Mulungu amatikhululukira**

**“Ndipo musatitengere kokatiyesa, koma mutipulumutse kwa woipayo”**

**Tiyeni tipemphe chitetezo ndi pobisala ku zoipa zomwe zili padziko lapansi**

**“Pakuti wanu ndi ufumu ndi mphamvu ndi ulemerero wa nthawi zonse. Amen”**

**Tiyeni tizindikire kuti zonse zimene tili, tili nazo, ndi zimene timachita ndi za Mulungu. Iye yekha ndi woyenera ulemerero ndi matamando**

# DANIELI: DONGOSOLO LA PEMPHERO

“Choncho ndinatembenukira kwa Ambuye Mulungu ndipo ndinamudandaulira ndi kupempha posala kudya, ndi kuvala chiguduli ndi kudzola phulusa” (Danieli 9:3)

Pemphero lolembedwa mu Danieli 9:4-19 limatipatsa magawo anayi ofunika kwambiri a pemphero:

Matamando  
(Danieli 9:4)

Zopempha  
(Danieli 9:16-19)

Kulapa ndi  
chikhululukiro  
(Danieli 9:5-15)

Chiyamiko  
(Afilipi 4:6)



Danieli anasokonezedwa ndi Gabrieli asanamalize pemphero lake (chiyamiko).

Dongosolo limeneli likugwira ntchito pa mapemphero athu achinsinsi (a mseri) komanso a pagulu. Zoonadi, gawo la “kulapa ndi chikhululukiro” liyenera kusinthidwa kuti ligwirizane ndi pempherolo.

Dongosolo limeneli limatithandiza kuika maganizo athu onse pa Mulungu mupemphero, kuletsa kuti pemphero lisakhale ngati ‘mndandanda wa zogula’ m’sitolo ya Mulungu.

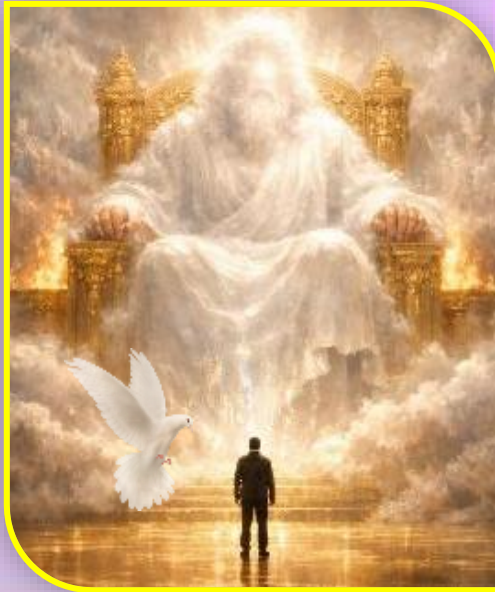




MAFUNSO ANAYI  
OKHUDZA  
PEMPHERO

**N'chifukwa chiyani tiyenera kupemphera ngati Mulungu amadziwa kale zonse?**

**Pemphero limatikweza kufika pa mpando wachifumu wa Mulungu ndipo limatikakamiza kudzifufuza ndi kuganiziranso za ubale wathu ndi Iye tsiku lililonse. Ngakhale tisakudziwa choti tinene, Mzimu Woyera amatithandiza (Aroma 8:26).**



**N'chifukwa chiyani tiyenera kupemphera pamene zonse zikuyenda bwino?**

**Angelo omwe sanachimwe amalambira Mulungu nthawi zonse. Nanga ife tiyenera kulambira Mulungu koposa bwanji?**

**Kuganiza kuti sitikutsowa Mulungu chifukwa choti zinthu zonse zikutiyendera bwino ndiko kunyada.**



**Kodi ndiyenera kupemphera ndi ndani?**

**Kutengera ndi nthawi:**

- 1. Patokha. Pamenepo pemphero lathu limakhala lapamtima kwambiri.**
- 2. Pamodzi ndi banja kapena m'magulu ang'onoang'ono.**
- 3. Mukachisi.**



**Kodi ndiyenera kumvetsera bwanji?**

**Njira yomveka bwino komanso yotetezeka kwambiri yochitira izi ndi kuphatikiza pemphero ndi kuphunzira Baibulo monga gawo la kudzipereka kwathu, kupewa kuchotsa maganizo athu onse kapena kungozimvetsera tokha.**



**“Kuzindikira mozama kusowa kwathu ndi khumbo lalikulu la zinthu zimene tikupempha ziyenera kuonetsedwa mumapemphero athu, apo ayi sadzamveka. Koma sitienera kutopa ndi kusiya zopempha zathu chifukwa yankho silinabwere nthawi yomweyo. ‘Ufumu wakumwamba uzunzidwa, ndipo okonda nkhondo aulanda mwamphamvu” (Mateyu 11:12). Chiwawa chomwe chikutchulidwa pano ndi kudzipereka koyera, monga momwe Yakobo adawonetsa. Sitingafunike kudzilimbikitsa kuti tikhale ndi nkhawa yayikulu, koma modekha komanso mofunitsitsa, tiyenera kupitiliza kupempha ku mpando wachifumu wa chisomo. Ntchito yathu ndiyo kudzichepetsa pamaso pa Mulungu, kuulula machimo athu, ndipo mwa chikhulupiriro kuyandikira pafupi ndi Mulungu.**